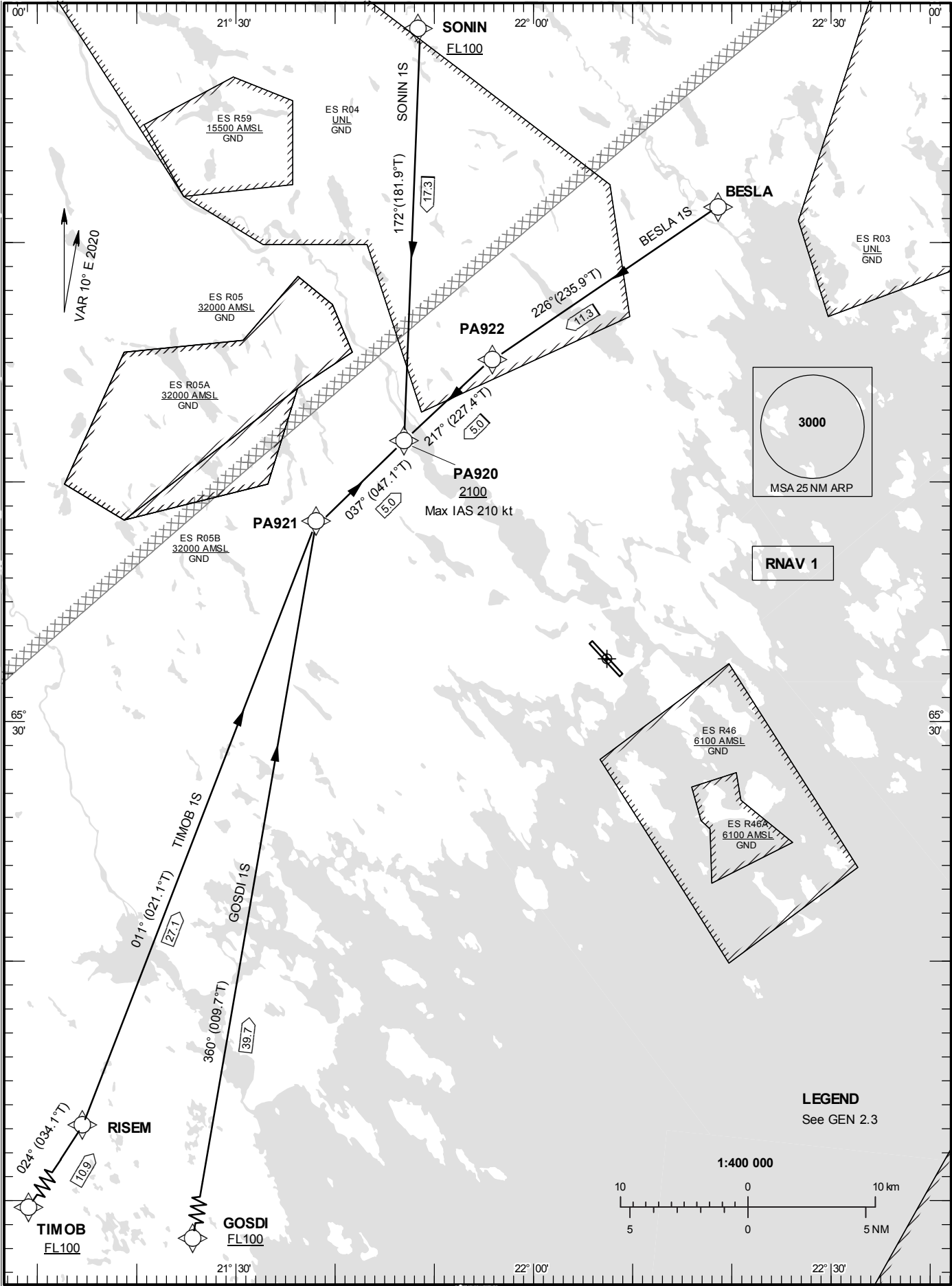


**STANDARD INSTRUMENT  
ARRIVAL CHART (STAR) -  
ICAO**

HGT and ALT in ft  
BRG are MAG  
TA 5000 ft AMSL

KALLAX TOWER	128.200
KALLAX APPROACH	125.450

**RNAV (GNSS) STAR RWY 14**



**LULEÅ/Kallax****Prescribed Coding of RNAV STAR for RWY 14**

RNAV 1 for positioning update.

Operators unable to fly RNAV 1 shall inform ATC "UNABLE RNAV STAR". Radar vectors will then be provided.

BESLA 1S: If passing BESLA at FL100 descent gradient 6.0% is needed to be at 2100 ft at FAP/FAF.

SONIN 1S: If passing SONIN at FL100 descent gradient 6.4% is needed to be at 2100 ft at FAP/FAF.

**BESLA 1S**

Path Term	Waypoint Identifier	Fly-over	Course °M(°T)	Dist (NM)	Turn Dir	Rest Alts (ft AMSL)	Speed Limits (kt)	VPA/ RDH (°/ft)	Rec Navaid	Navigation Specification
IF	BESLA	-	-	-	-	-	-	-	-	RNAV 1
TF	PA922	-	226°(235.9°)	11.3	-	-	-	-	-	RNAV 1
TF	PA920	-	217°(227.4°)	5.0	-	+2100	-210	-	-	RNAV 1

STAR instruction: BESLA – PA922 – PA920 (2100 ft or above, max IAS 210 kt)

**GOSDI 1S**

Path Term	Waypoint Identifier	Fly-over	Course °M(°T)	Dist (NM)	Turn Dir	Rest Alts (ft AMSL)	Speed Limits (kt)	VPA/ RDH (°/ft)	Rec Navaid	Navigation Specification
IF	GOSDI	-	-	-	-	+FL100	-	-	-	RNAV 1
TF	PA921	-	360°(009.7°)	39.7	-	-	-	-	-	RNAV 1
TF	PA920	-	037°(047.1°)	5.0	-	+2100	-210	-	-	RNAV 1

STAR instruction: GOSDI (FL100 or above) – PA921 – PA920 (2100 ft or above, max IAS 210 kt)

**SONIN 1S**

Path Term	Waypoint Identifier	Fly-over	Course °M(°T)	Dist (NM)	Turn Dir	Rest Alts (ft AMSL)	Speed Limits (kt)	VPA/ RDH (°/ft)	Rec Navaid	Navigation Specification
IF	SONIN	-	-	-	-	+FL100	-	-	-	RNAV 1
TF	PA920	-	172°(181.9°)	17.3	-	+2100	-210	-	-	RNAV 1

STAR instruction: SONIN (FL100 or above) – PA920 (2100 ft or above, max IAS 210 kt)

**TIMOB 1S**

Path Term	Waypoint Identifier	Fly-over	Course °M(°T)	Dist (NM)	Turn Dir	Rest Alts (ft AMSL)	Speed Limits (kt)	VPA/ RDH (°/ft)	Rec Navaid	Navigation Specification
IF	TIMOB	-	-	-	-	+FL100	-	-	-	RNAV 1
TF	RISEM	-	024°(034.1°)	10.9	-	-	-	-	-	RNAV 1
TF	PA921	-	011°(021.1°)	27.1	-	-	-	-	-	RNAV 1
TF	PA920	-	037°(047.1°)	5.0	-	+2100	-210	-	-	RNAV 1

STAR instruction: TIMOB (FL100 or above) – RISEM – PA921 – PA920 (2100 ft or above, max IAS 210 kt)